

DATA

Technical data HTC 300 R / HTC 300 T:

nominal load:	300 kg
operating temperature:	min. 10 °C / max. 60 °C
IP-code:	IP 64
diameter:	527 mm
(without hose- and cable connections)	
overall height:	80 mm
<i>(HTC 300 R/HTC 300 T coupled)</i>	
weight:	17 kg <i>(basic unit without media connections)</i>
Series:	
HTC 180	180 kg / load
HTC 300	300 kg / load
HTC 600	600 kg / load

ACCESSORY:

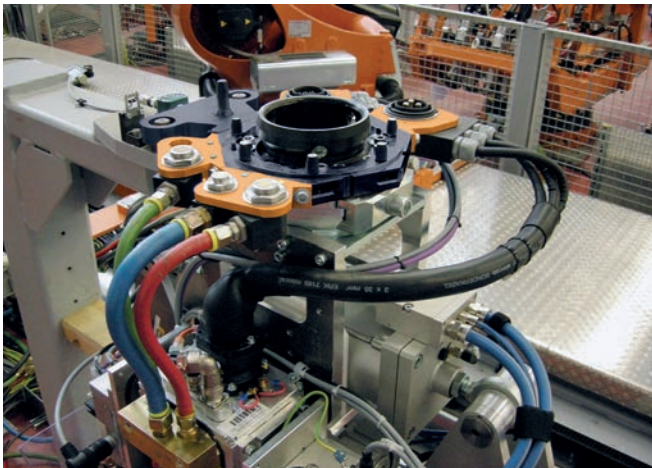
Tool rest:

Modular design enables customized adaptations, optional inductive or mechanical tool retrieval.



Additionally available:

Programming kit and transport jig



MACHINE TOOLS:

- CNC milling
- CNC turning
- CNC grinding
- honing
- lapping
- air conditioned measuring room

REFERENCES:

- aerospace industry
- medical technology
- defence technology
- gear manufacturing
- automotive industry
- chemical industry
- pharmaceutical industry

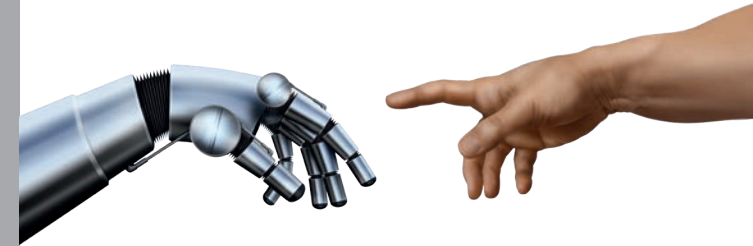


SHF Stefan Holzer
Feinmechanik

Salurner Straße 2 a
86356 Neusäß, Germany
Fon 0821 454438-0
Fax 0821 454438-20
info@holzer-feinmechanik.de
www.holzer-feinmechanik.de

SHF Stefan Holzer
Feinmechanik

HOLZER Robotic Tool Changer HTC 180 HTC 300 HTC 600 Made in Germany



Experience · Engagement · Quality

